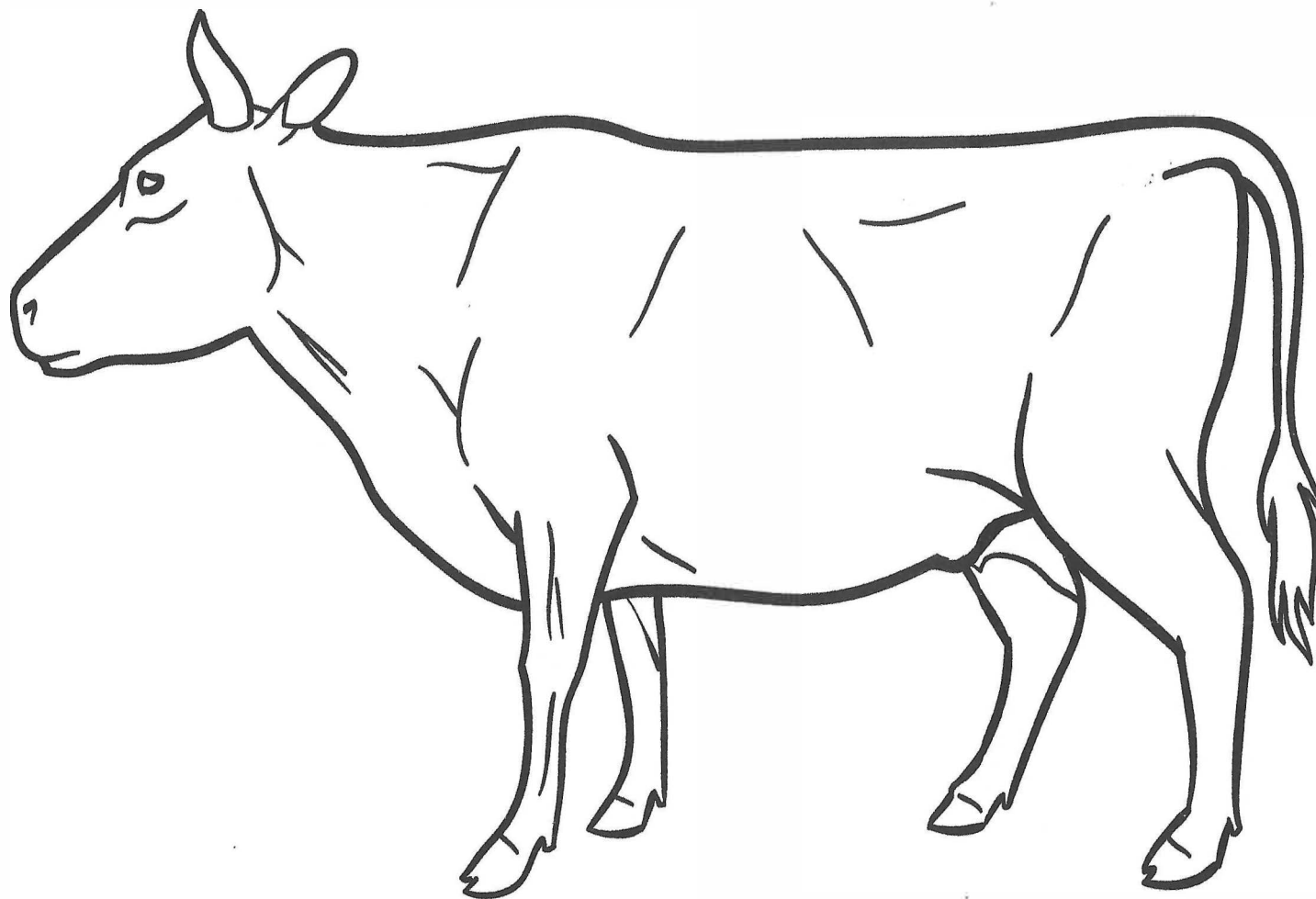




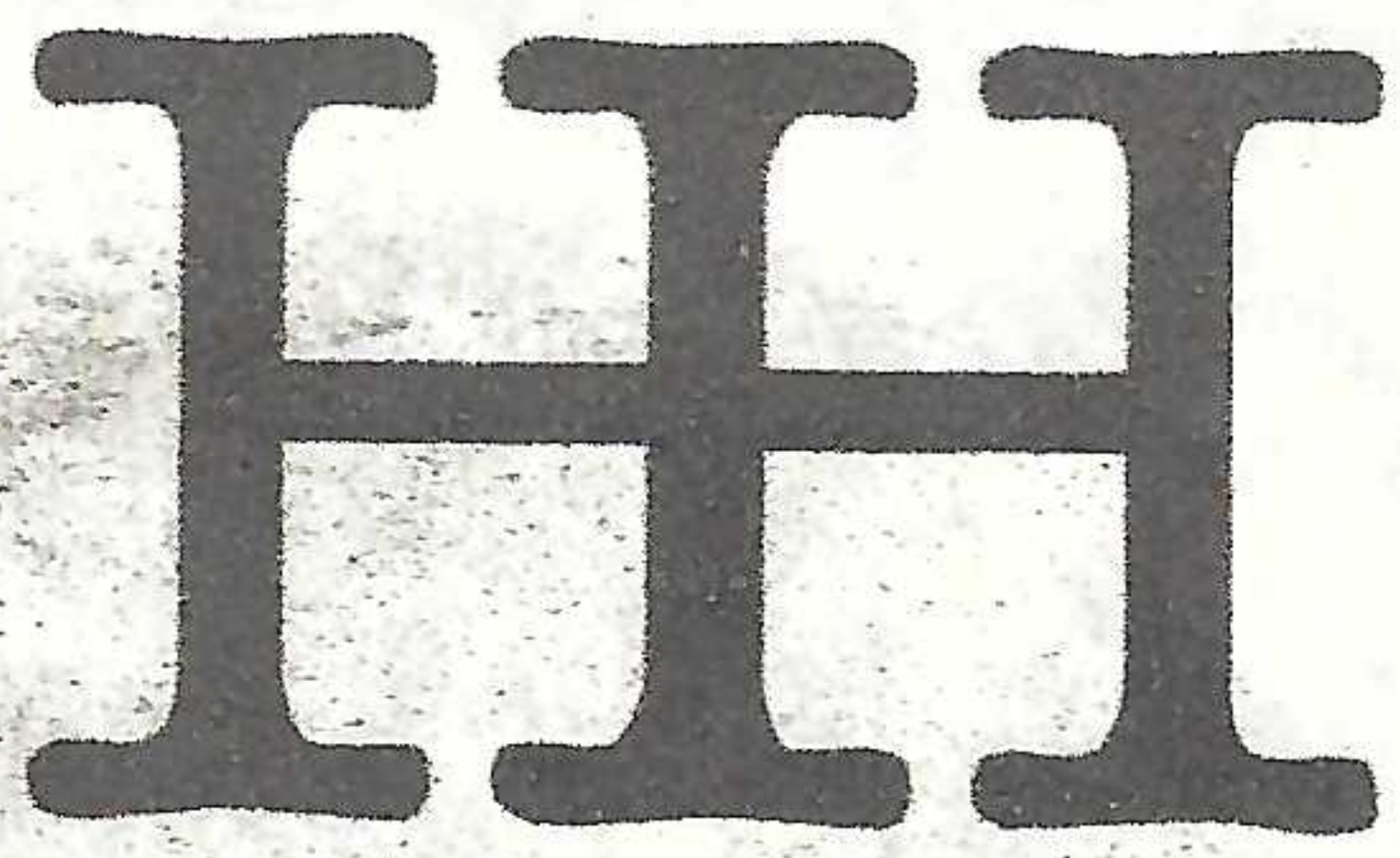
# A Beef Birth Certificate

Ear Tag Numbers and Brands Tell Us Who this animal belongs to and gives them a "Name."

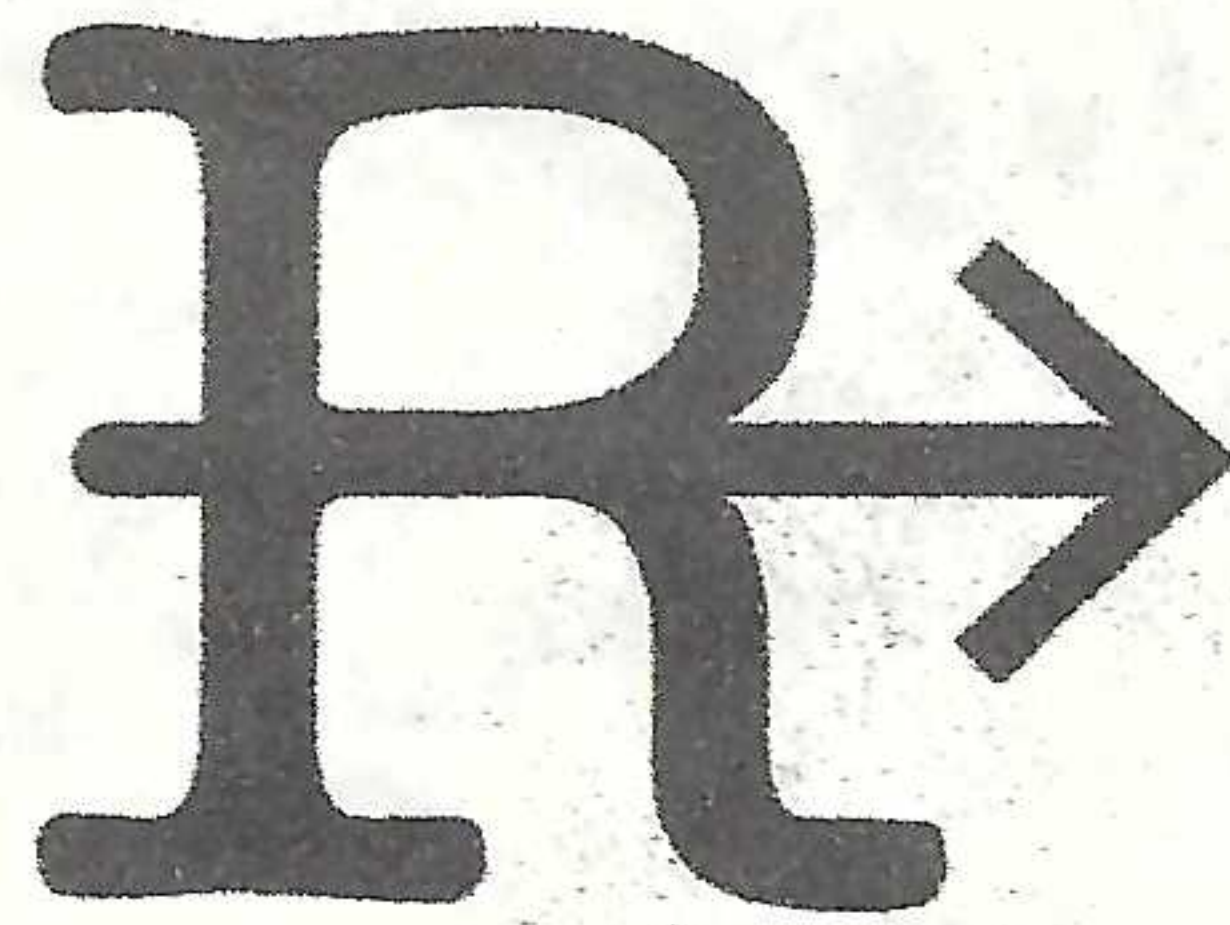


# WHAT'S YOUR BRAND

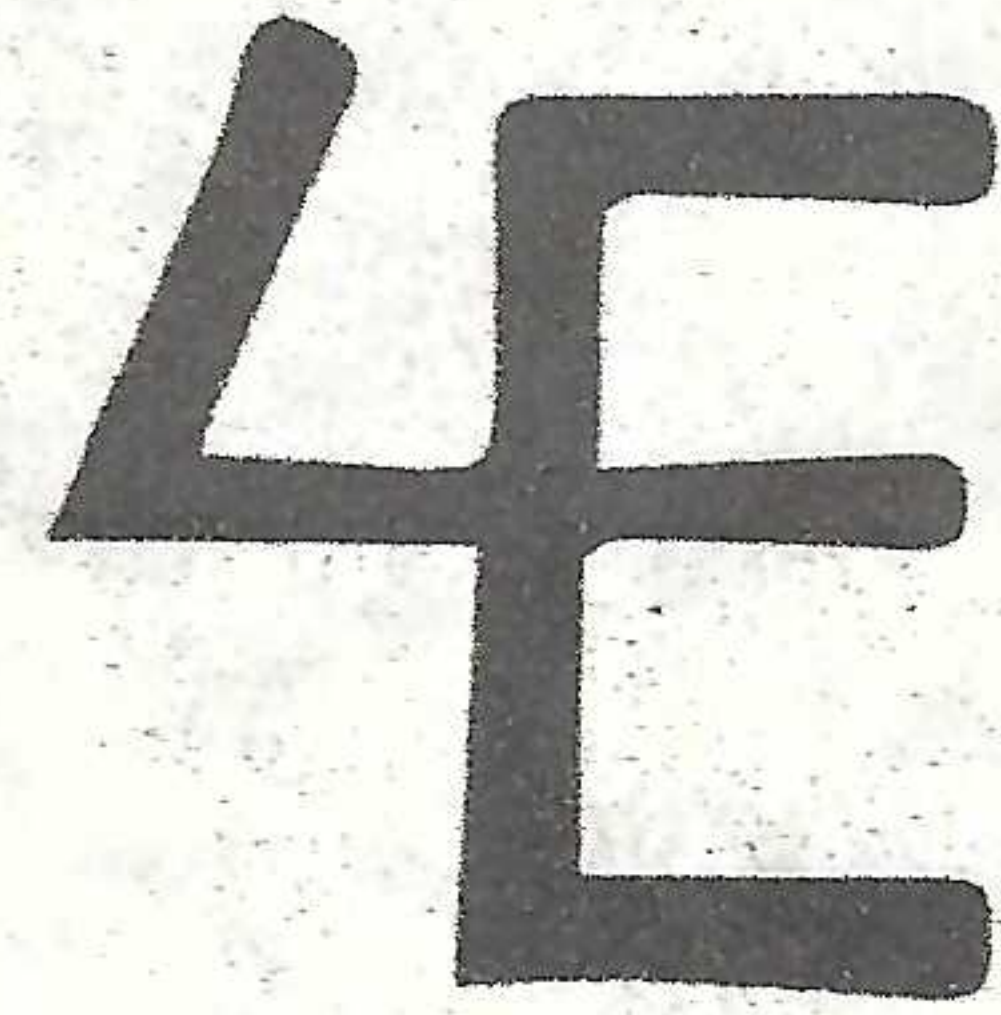
Ranches all have different brands, it's like their fingerprint, unique and special designs just for them. Some examples are:



Double H



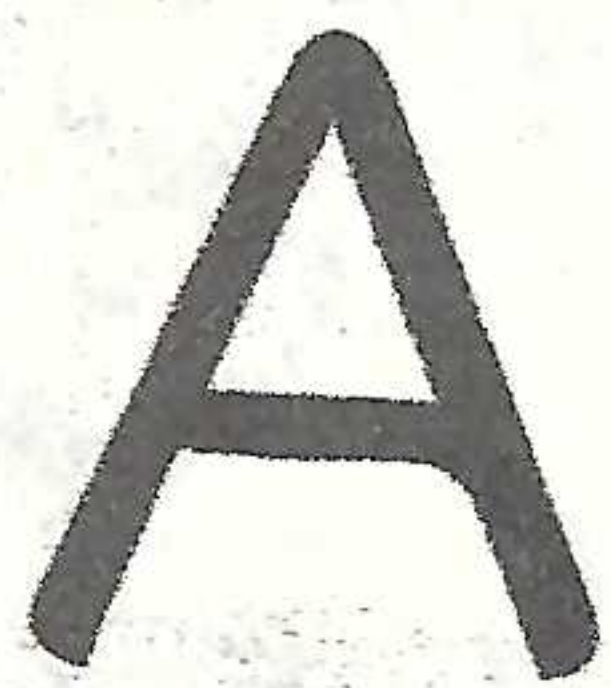
R Arrow



Four E

Design a brand that is special for you! For your family or your classroom or your school. Use letters or numbers, here's something to think about:

Take, for example, the letter "A". Mark it at an angle and it's a "leaning" or "tumbling A". Topple it on its side and it becomes a "lazy A". Turn it upside down and it's a "crazy A". Give it wings, feet or a semicircular rocker and make it "ying", "walking" or "rocking". Rendering the letter in curvy script makes it "running." And that's before adding numbers and symbols to make a brand even more distinct.



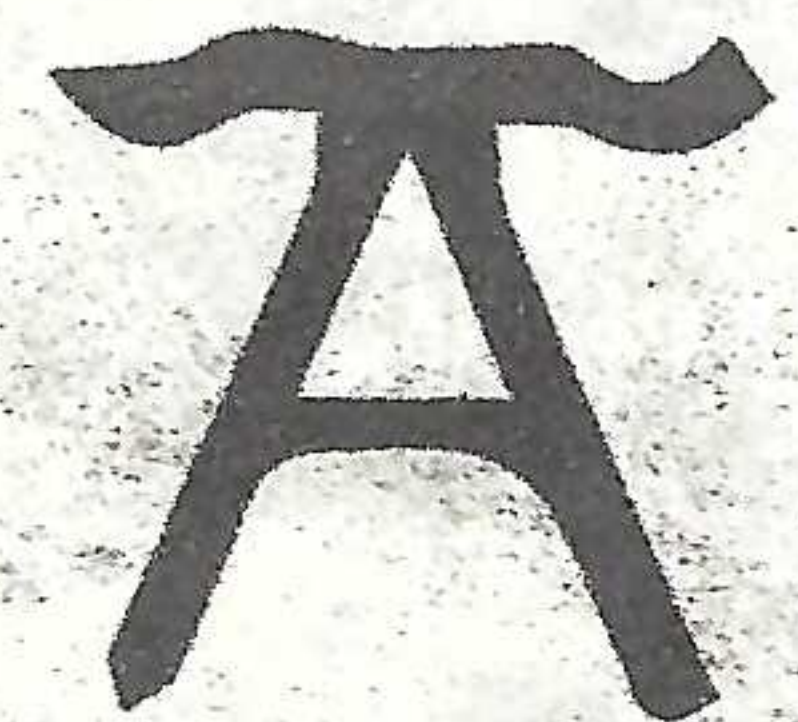
Regular A



Tilted, Tumbling,  
or Toppling A



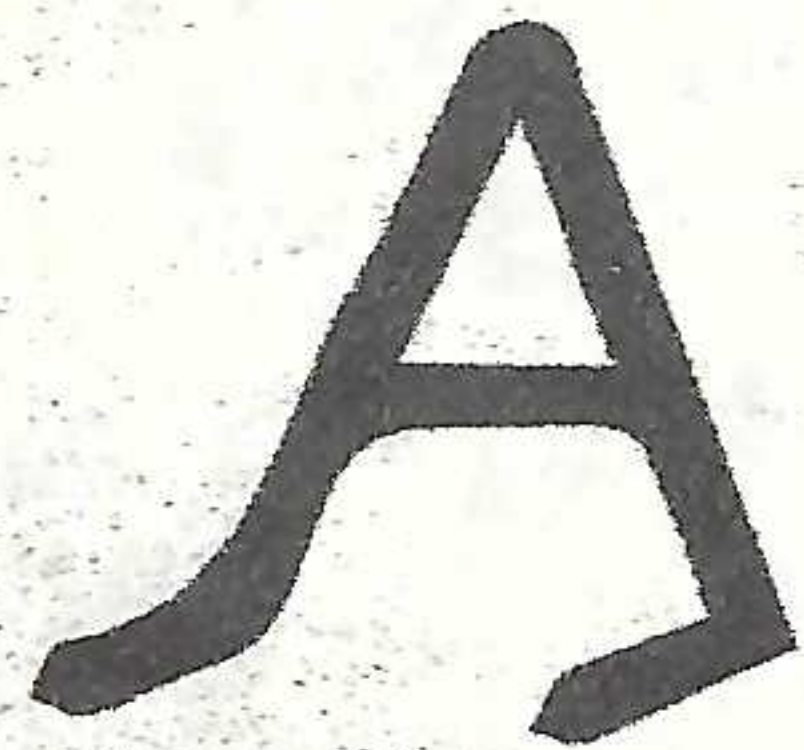
Walking A



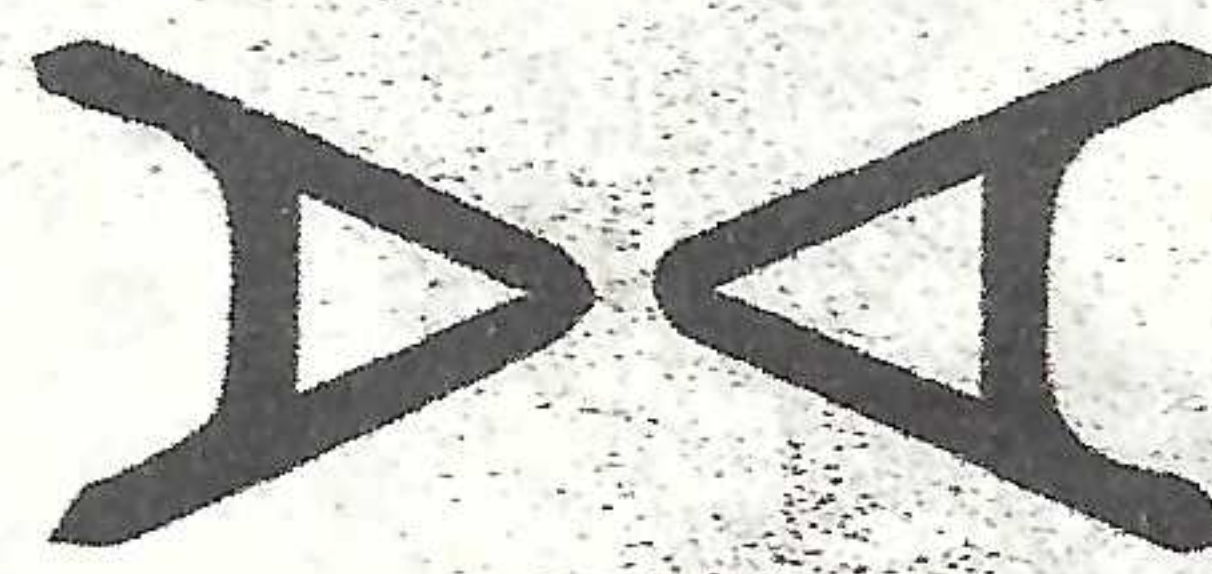
Flying A



Running A



Dragging A



Lazy A



Crazy A

Your Brand

A large, empty rectangular box provided for the user to draw or write their own brand logo.